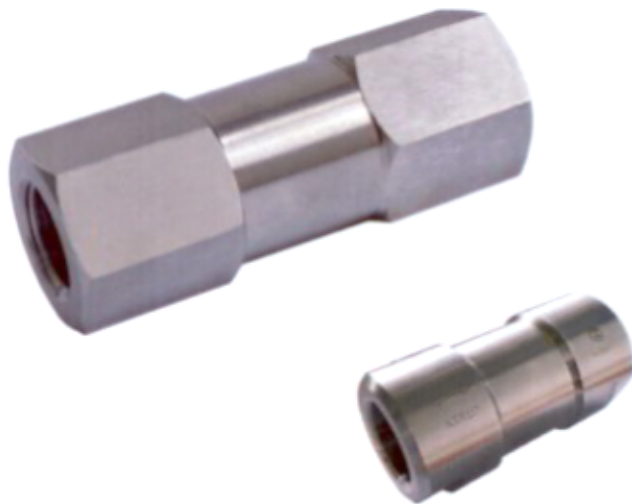




**CHECK VALVE**



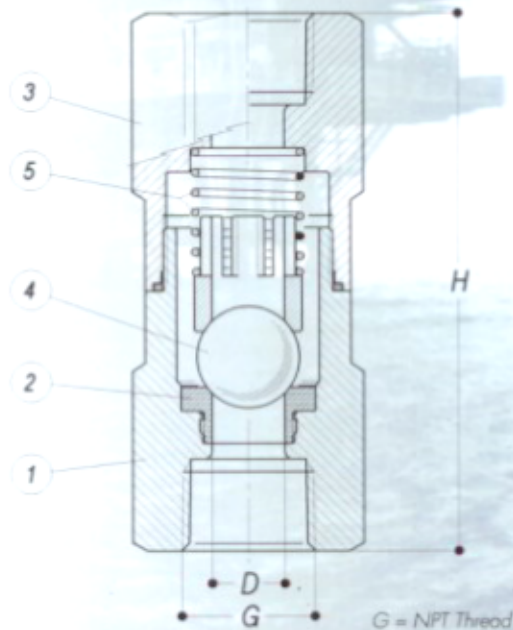
**Art. 145**

**BALL CHECK VALVE**  
Class 800 - 3000 - 6000 psi

- Valve for vertical installation •

SIZE	1/4"	3/8"	1/2"	3/4"	1"	1 1/4"	1 1/2"	2"
Available from DN	8	10	15	20	25	32	40	50

Pos	Part Name	MATERIAL SELECTION
1-3	Body/Structure	ASTM A 105 - A 105N - ASTM A 350 gr LF2 ASTM A 182 - gr F316 - ASTM A 182 gr. F316L
2	Packings	PTFE • Graphite
4	Ball	ASTM A 182 - F316/F316L • Tecnopolymer
5	Spring	AISI 302



• Maximum operating Temperature : +250° C •

G	1/4"	3/8"	1/2"	3/4"	1"	1 1/2"	2"
DN	8	10	15	20	25	40	50
D	8	8	10	14	16	22	24
H	90	90	90	130	140	170	180

For further details see paragraph: **TECHNICAL INFORMATIONS**